

Контрольный квадрат



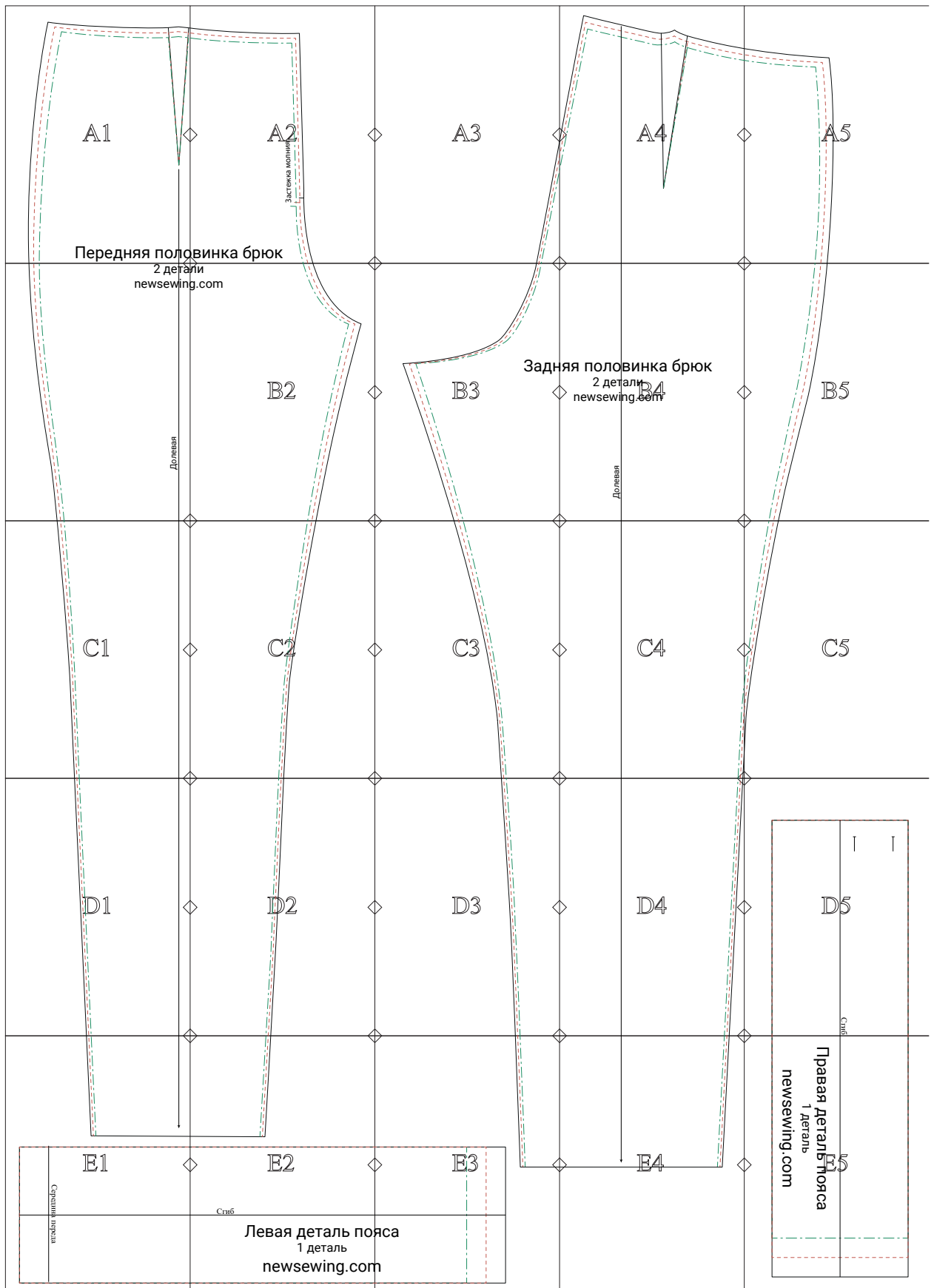
Распечатайте этот лист первым

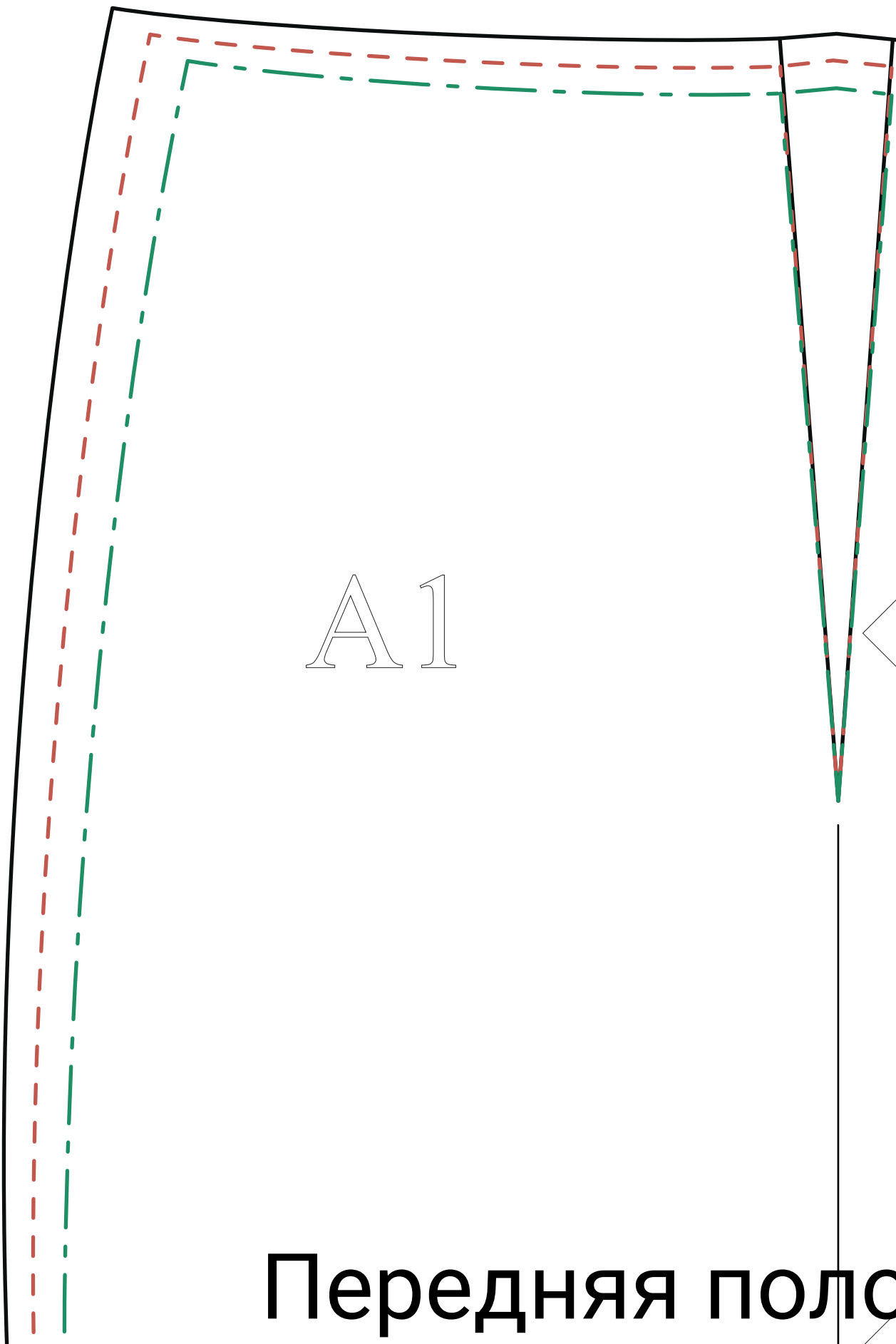
В настройках вашего принтера укажите
печать документа 100% (без масштабирования).
И только лишь после того, когда квадрат
на распечатаном вами листе будет соответствовать
размеру 10x10 см,
приступайте к печати листов выкройки.

Выкройка женских брюк

СХЕМА

Описание модели: https://www.newsewing.com/view_post.php?id=609





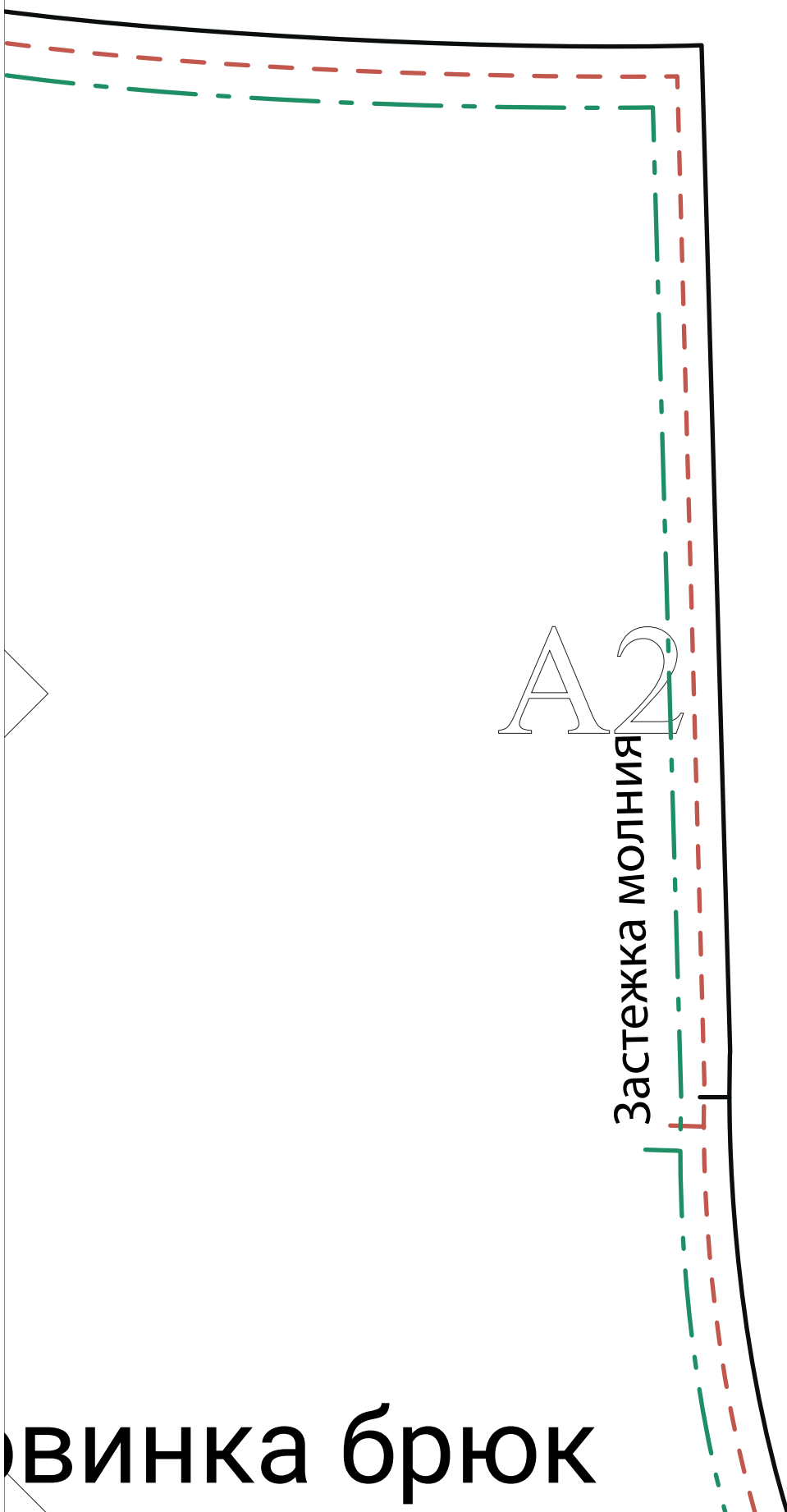
A1

Передняя поло

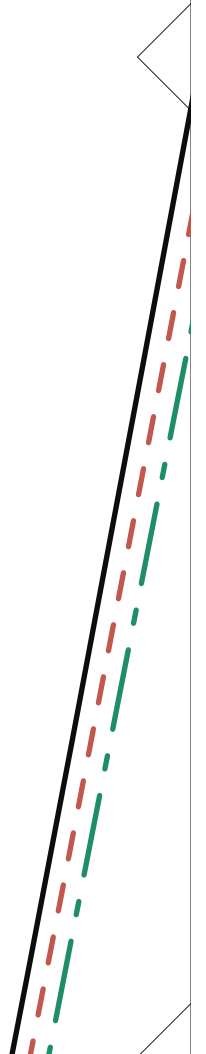
A2

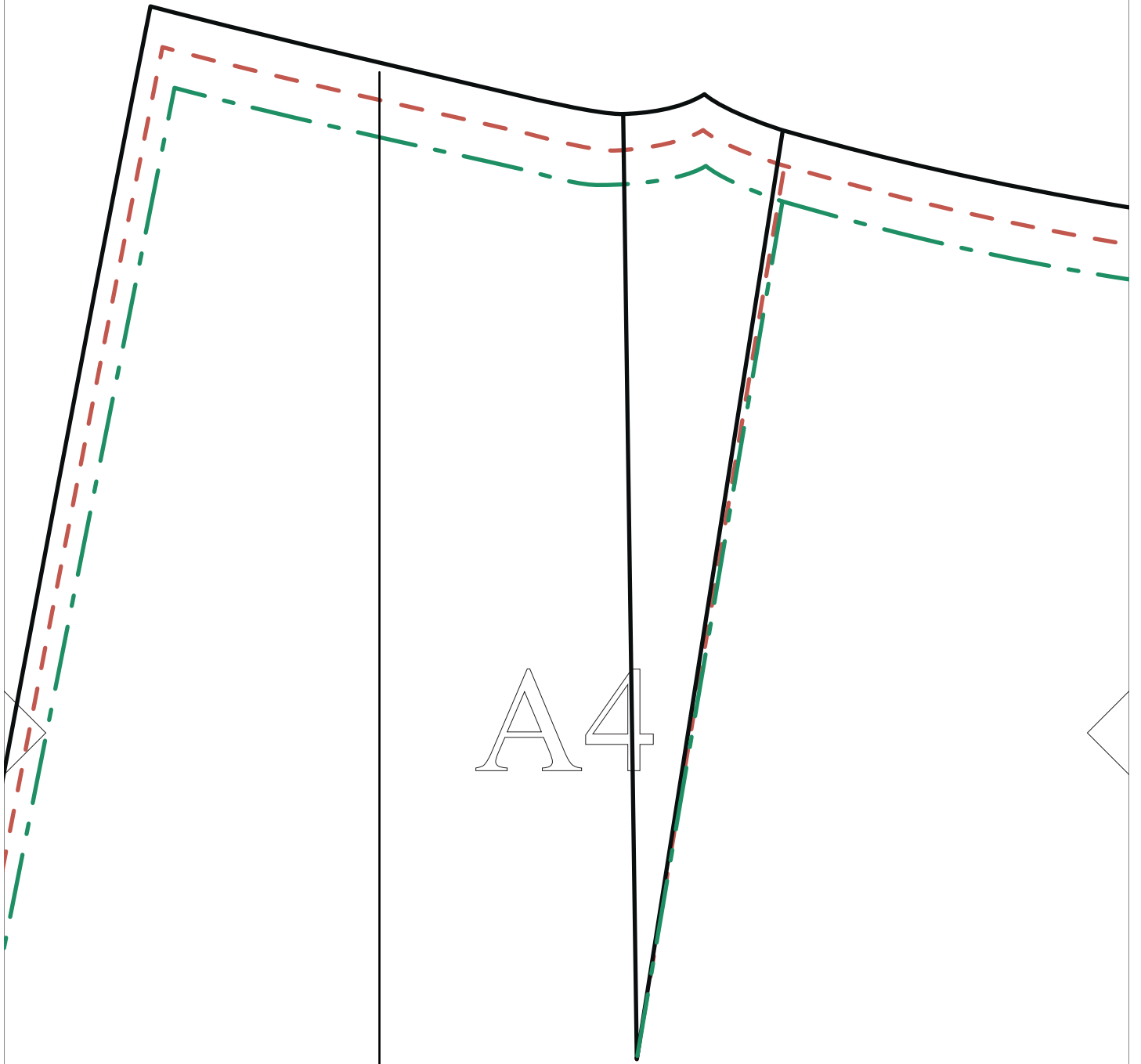
Застежка молния

Винка брюк

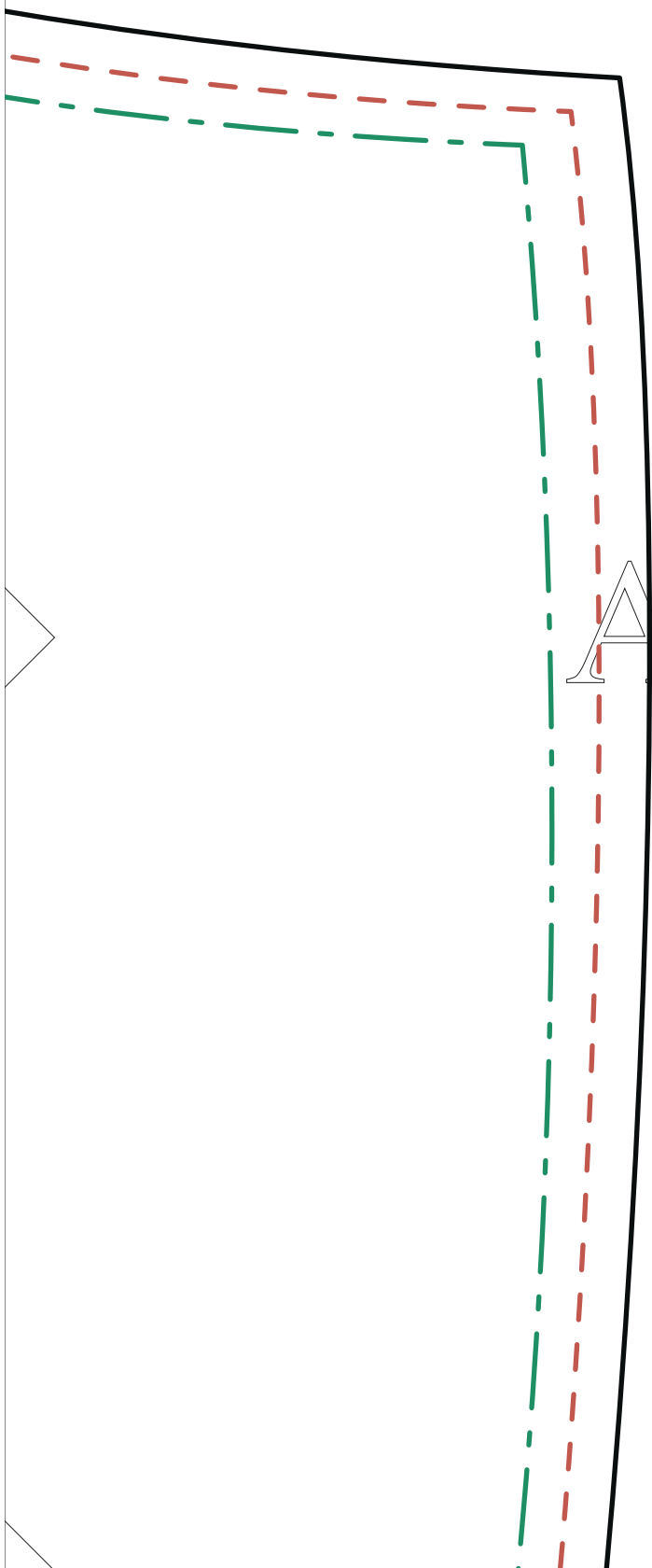


A3





A4



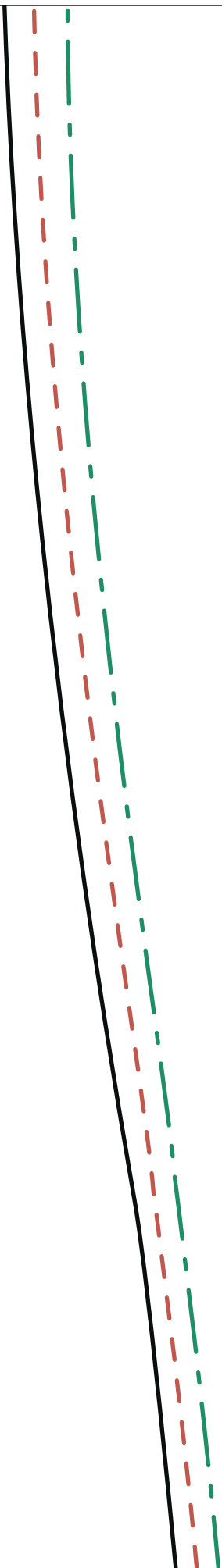
A5



2 дета
newsewin

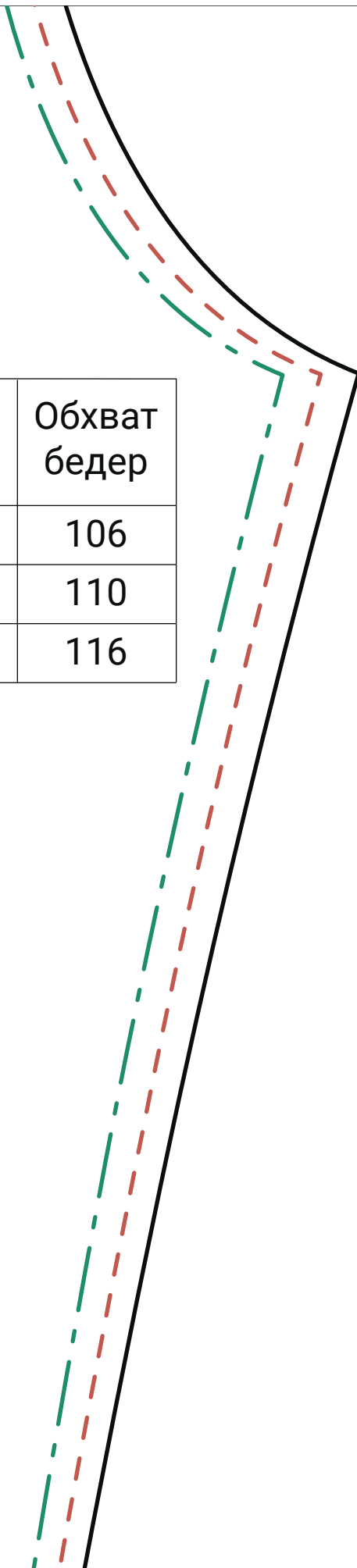
B1

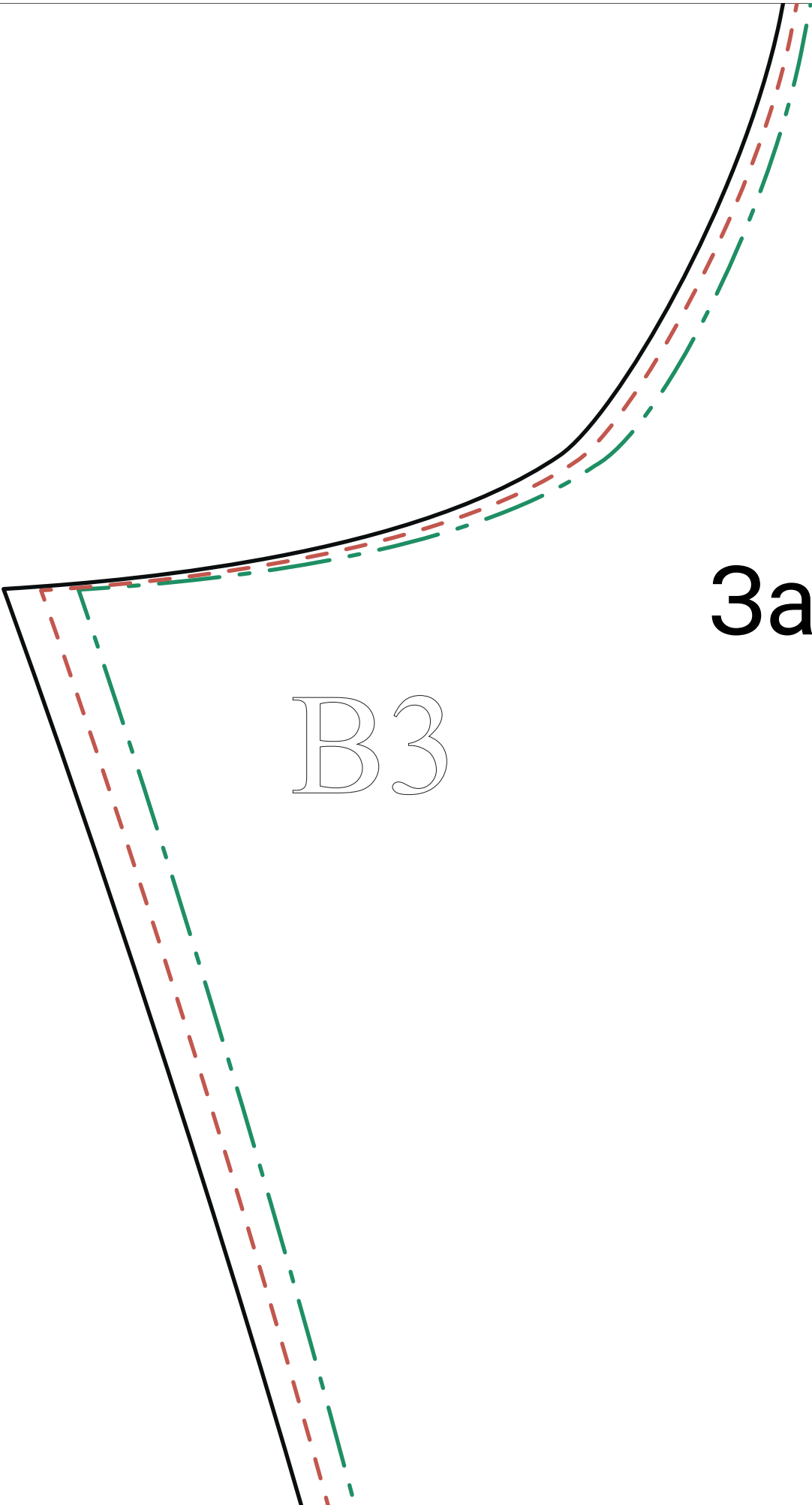
Долевая



Обозначение (цвет линии)	Обхват талии	Обхват бедер
	82	106
	86	110
	92	116

B2





ВЗ

Задн

Правая половина брюк

2 детали

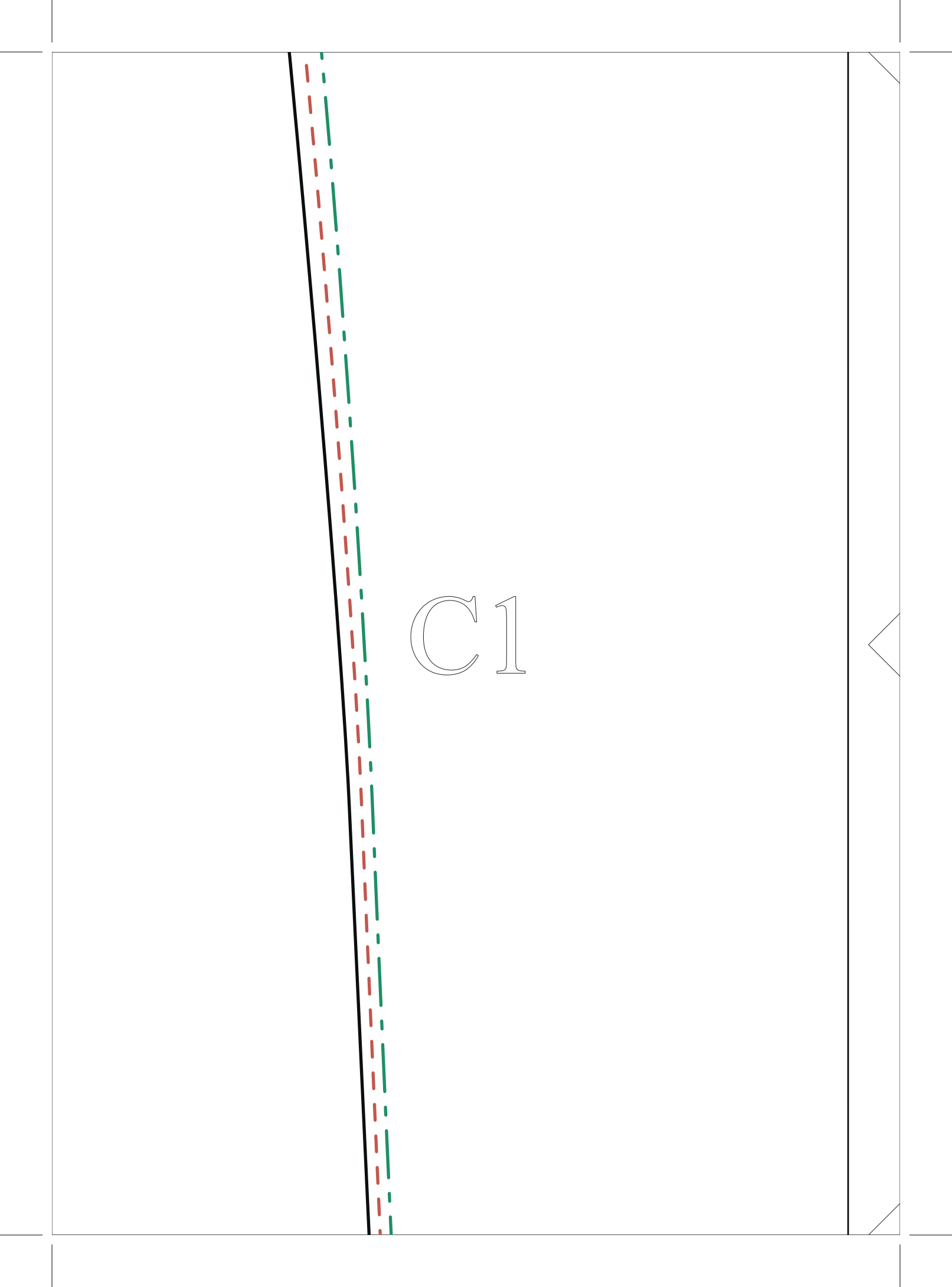
newsewing.com

Долевая



A technical drawing of a B5 envelope. The drawing shows a rectangular envelope with a flap on the left side. The flap is shown in a partially open position, with a solid black line representing the flap's edge and two dashed lines (one green, one red) representing the fold lines. The text "B5" is printed in a serif font in the center of the envelope. The drawing is enclosed in a rectangular frame with small triangles at the corners, indicating the envelope's orientation.

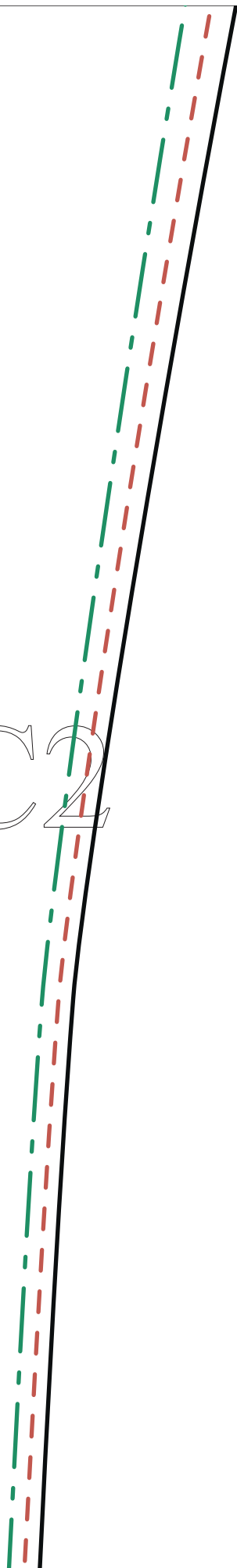
B5



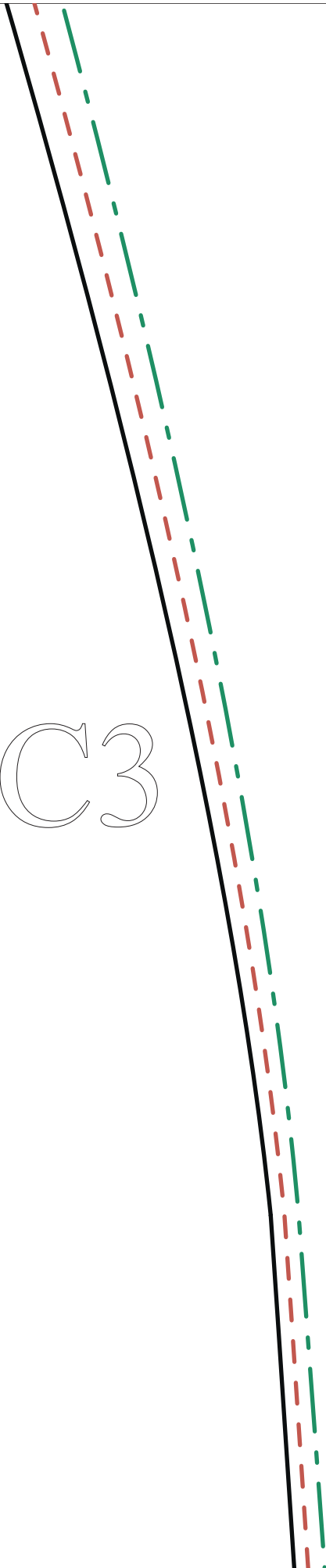
A technical drawing showing a vertical line on the left side of a page. The line is solid black. To its right, there are two dashed lines: a red one and a green one. The red dashed line is closer to the solid black line than the green one. The label 'C1' is positioned to the right of the dashed lines. The entire drawing is enclosed in a rectangular frame with a vertical line on the right side. There are small triangular markers at the top and bottom corners of the right vertical line.

C1

C2

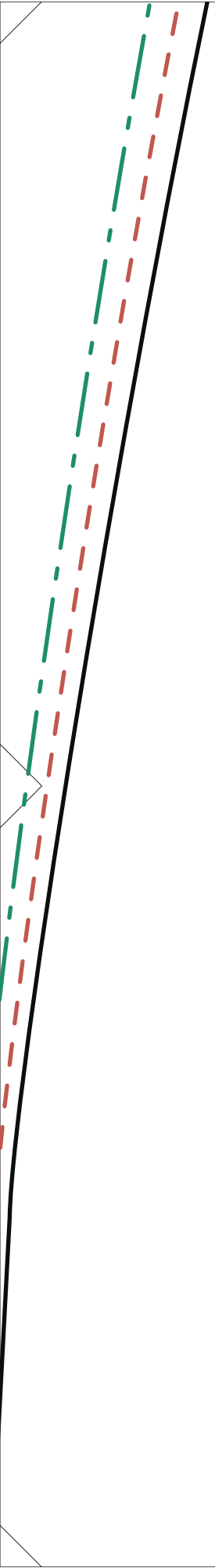


C3



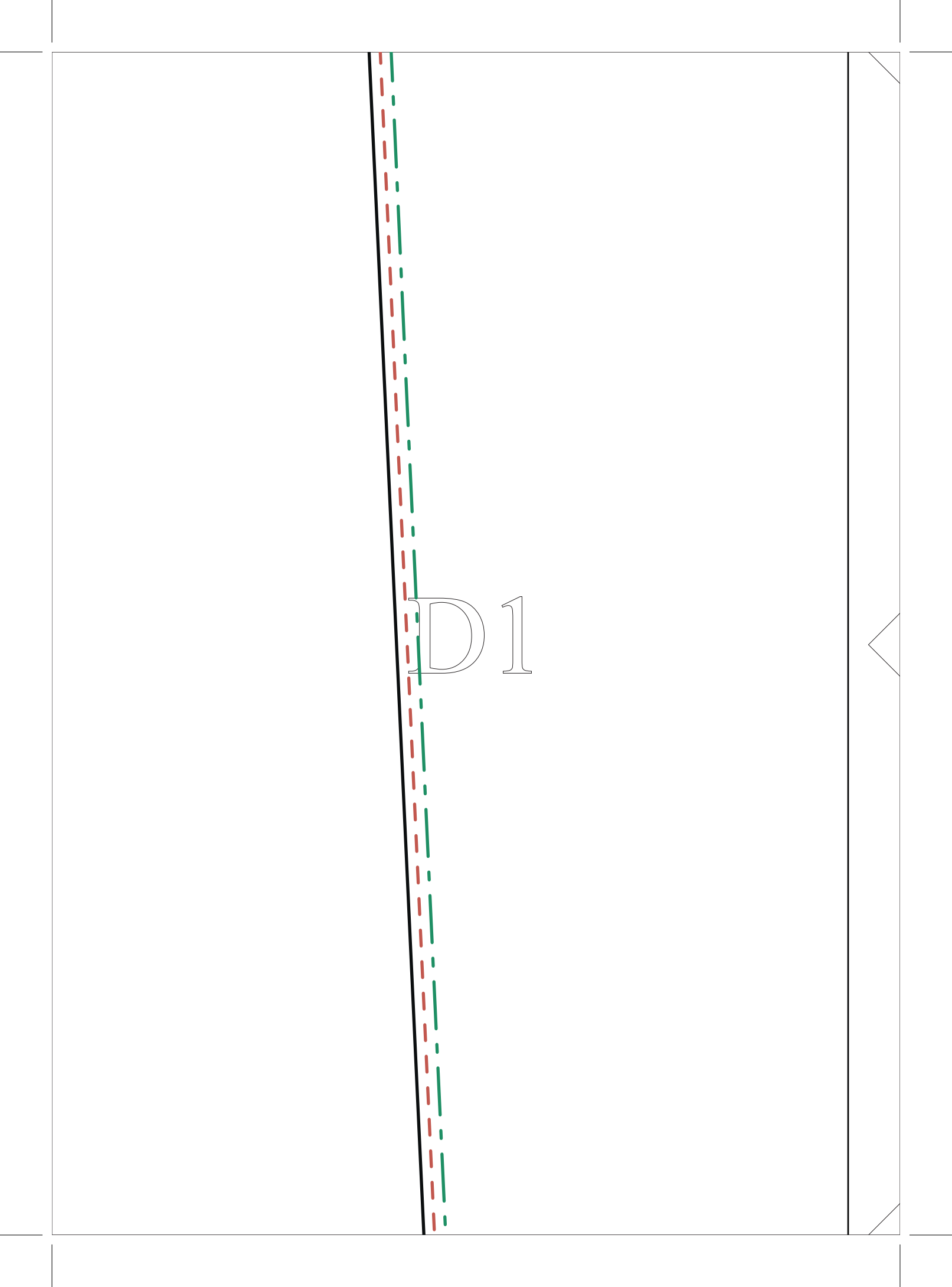
C4





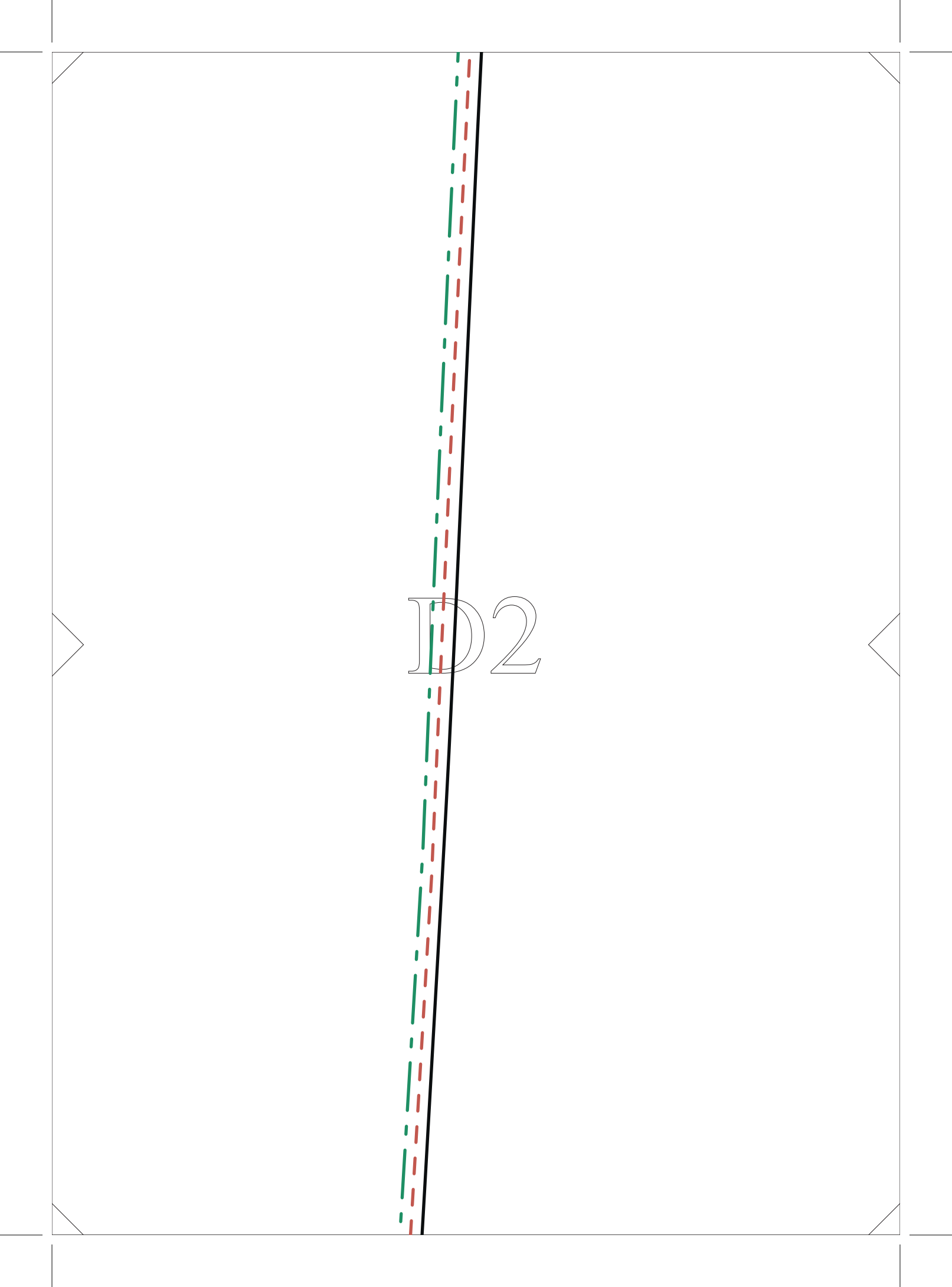
C5





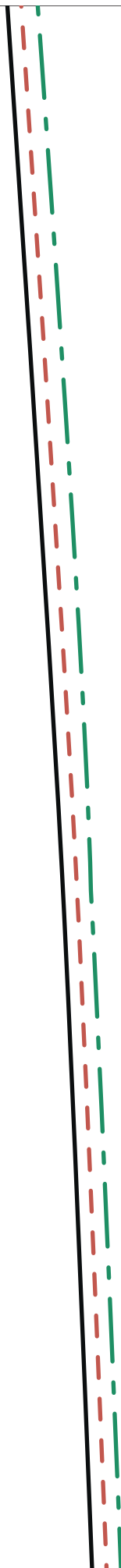
A technical drawing on a white background with a black border. A solid black vertical line runs down the left side. To its right are two dashed lines: a red one and a green one. The red dashed line is closer to the black line, and the green dashed line is further to the right. The label 'D1' is positioned to the right of the dashed lines, centered vertically between them. On the far right edge, there are two small triangular symbols pointing left, one near the top and one near the bottom.

D1

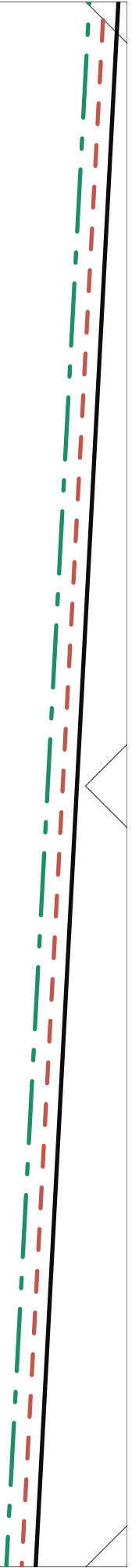


D2

D3



D4



D5

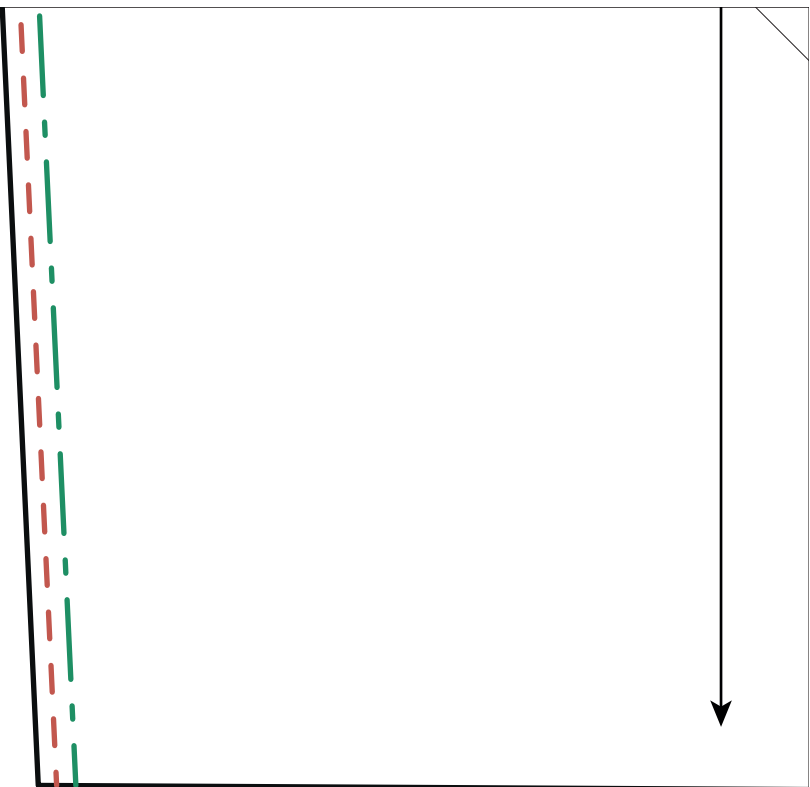
T

T

Стнб

E1

Середина переда



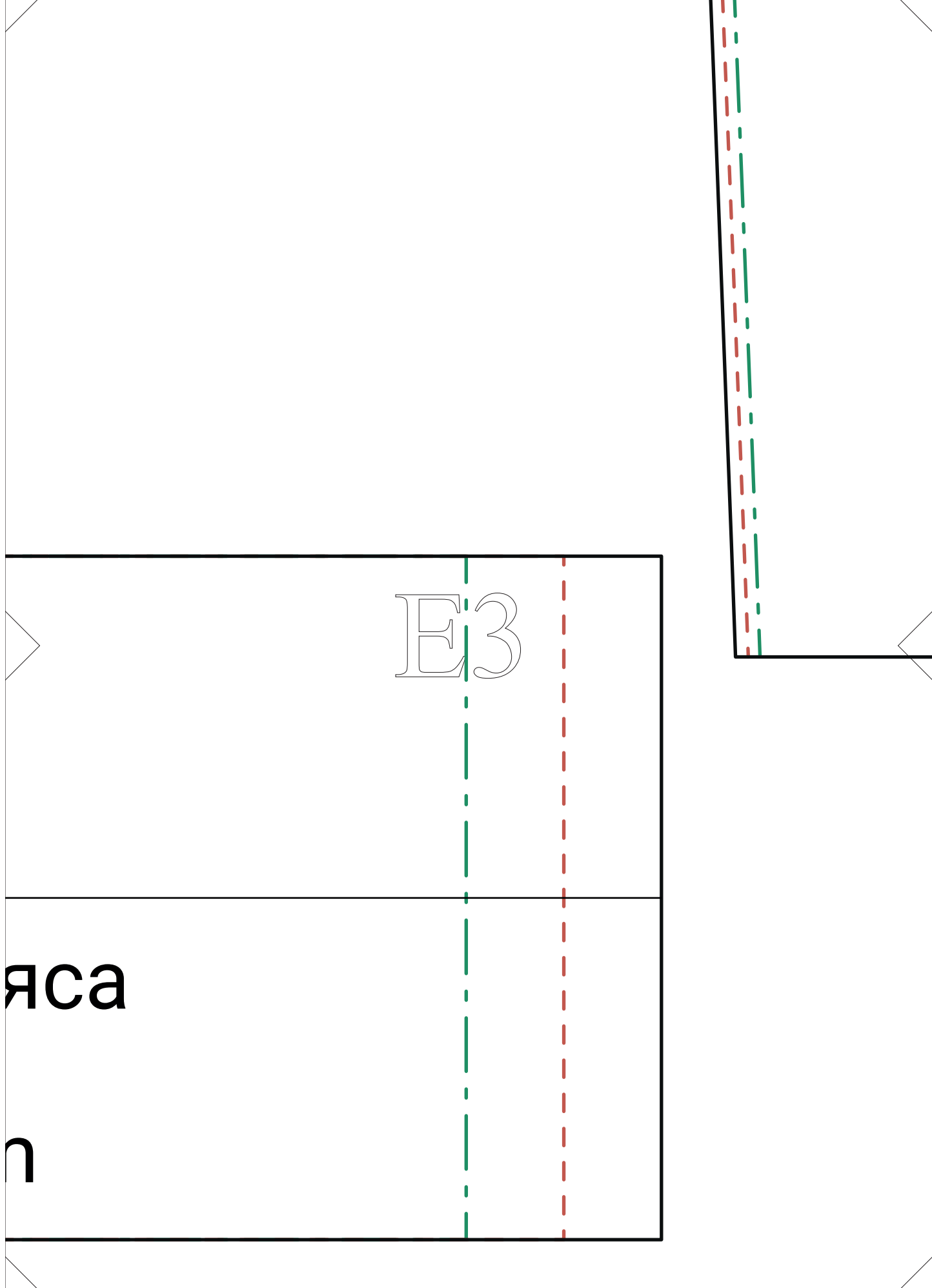


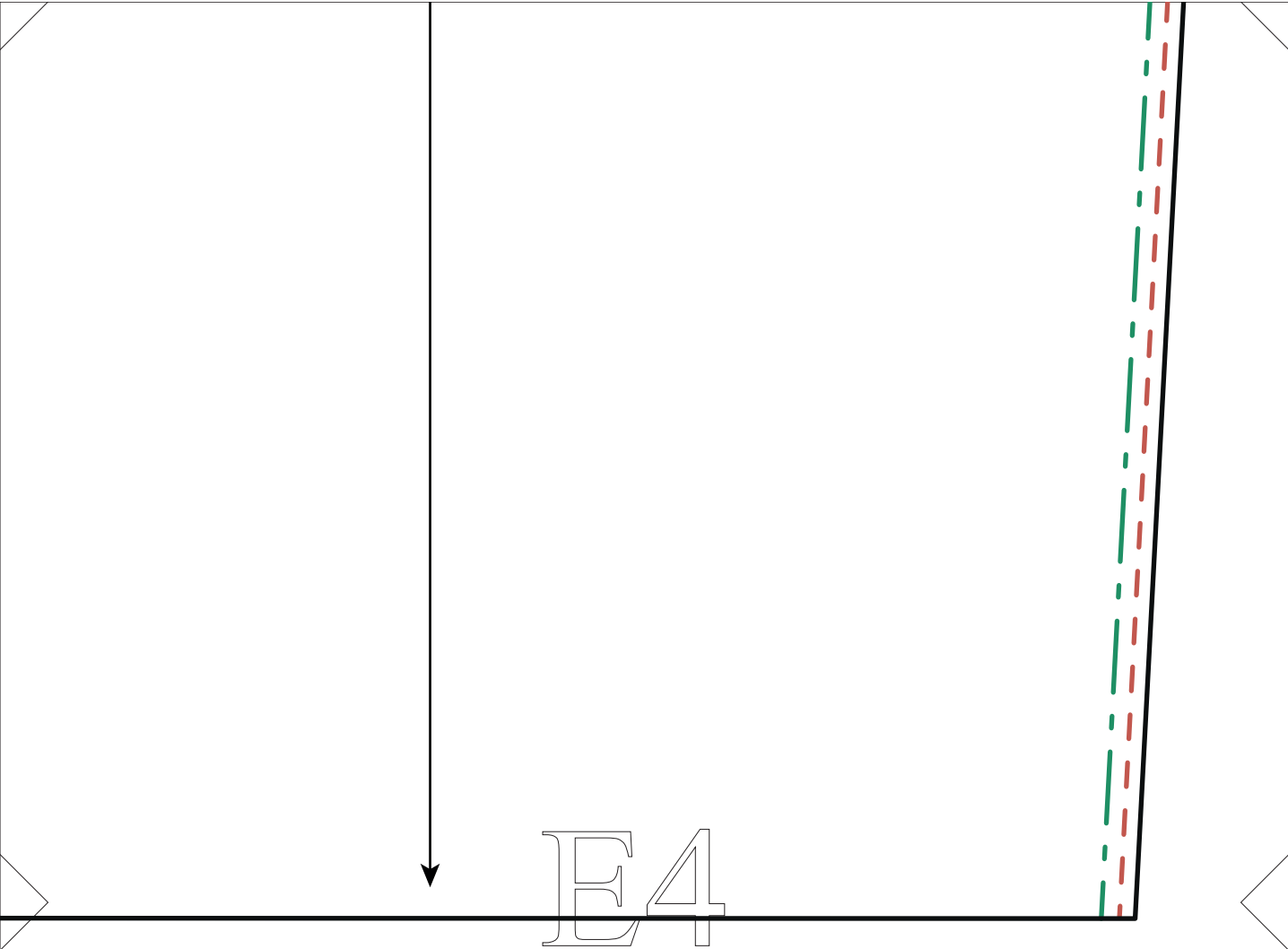
E2

Сгиб

Левая деталь по
1 деталь

newsewing.com





E4

Правая деталь пояса

1 деталь

newsewing.com

